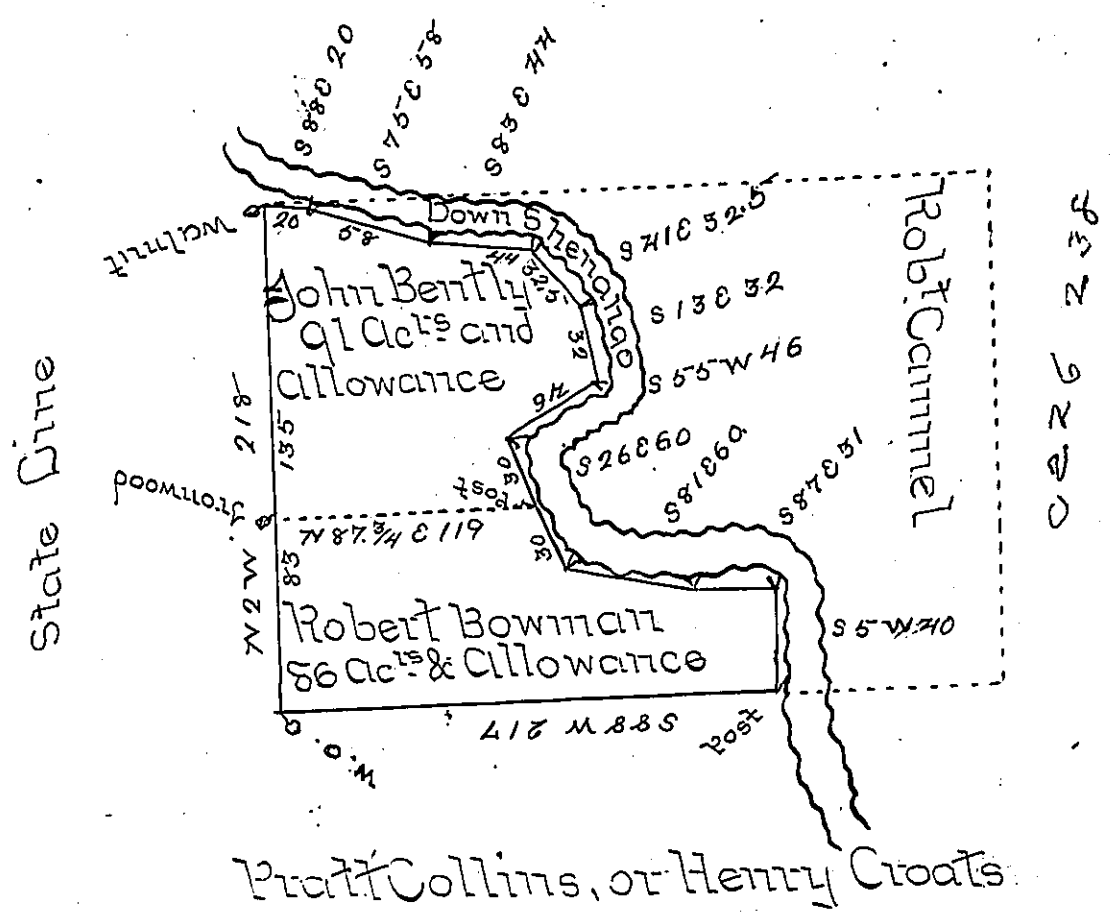


Willm Haywood



Note: The dotted line across the tract is the Conditional line agreed on by the parties. Bowman has sold his part to W^m Haywood and has left the Country. His Mother and Sisters Resides on the Land and Claims as their property

J.A.

Situate in Shenango Township Mercer County Containing one hundred and Seventy Acres and Allowance &c Survey'd 14th October 1814 - In pursuance of a Warrant Granted to John Bentley (for himself, and in trust for Robt Bowman) dated 10th ^{March} 1813 - and is a part of a Tract of 401 Acres & 42 perches Granted to Pressly Nevill on a Warrant dated 18th ^{March} 1794.

Rich^d M. Beech Esq^r
 Surveyor General
 State of Pennsylvania

Jos. Ashton
 Dep^y Surv^r M.C.

IN TESTIMONY that the above is a copy of the original remaining on file in the Department of Internal Affairs of Pennsylvania, made conformably to an Act of Assembly approved the 16th day of February, 1833, I have hereunto set my Hand and caused the Seal of said Department to be affixed at Harrisburg, this sixth day of February 1900.

James W. Latta
 Secretary of Internal Affairs.